

DISTILL

YOUR SLIDES



EDUCATIONXdesign

1

THE REDUNDANCY TEST

2

<p>to children of African children in schools</p>	<p>agricultural and mechanical education</p>	<ul style="list-style-type: none"> These schools were to be common to children of all social and economic classes. African children largely were excluded from common schools until after the Civil War 	<p>agricultural</p>
<p>aring</p> <p>provide growing</p> <p>ath for</p> <p>ected the 1813 Hartford Female</p>	<p>The Development of American Secondary Schools</p> <ul style="list-style-type: none"> Academies were the major secondary schools in the first half of the nineteenth century. They were single-sex and coeducational. Academies prepared males for college. High schools developed such as the Boston English Classical School. In the 1870s, school districts levied taxes to support public high schools. In 1892, the Committee of Ten defined the mission and purposes of high schools. In 1918, the Commission on the Reorganization of Secondary Education redefined high school as a comprehensive institution. 	<p>Normal Schools and Preparing Women as Teachers</p> <ul style="list-style-type: none"> Normal schools were established to provide standardized teacher training for the growing common school movement. Normal schools provided a career path for women. Catharine Beecher (1800-1878) connected the common school movement to women's education. Beecher created the Hartford Female Seminary. 	<p>The Development of American Secondary Schools</p> <ul style="list-style-type: none"> Academies were the major secondary schools in the first half of the nineteenth century. They were single-sex and coeducational. High schools developed such as the Boston English Classical School. In the 1870s, school districts levied taxes to support public high schools. In 1892, the Committee of Ten defined the mission and purposes of high schools. In 1918, the Commission on the Reorganization of Secondary Education redefined high school as a comprehensive institution.
<p>nt and</p> <p>ed and created</p> <p>ntary</p> <p>the and oversee</p> <p>1802</p>	<p>The American College and University</p> <ul style="list-style-type: none"> Protestant denominations established church-affiliated institutions starting in the seventeenth century. The Morrill Act of 1862 generated income from land grants to support state colleges for 	<p>Common School Movement and One-Room Schools</p> <ul style="list-style-type: none"> The common school movement gained momentum between 1820 and 1850 and created publicly controlled and funded elementary education. Horace Mann served as secretary of the Massachusetts Board of Education and oversaw the development of the common school movement. 	<p>The American College and University</p> <ul style="list-style-type: none"> Protestant-affiliated institutions The Morrill land grants

3

<p style="text-align: center;">The Development of American Secondary Schools</p> <ul style="list-style-type: none"> Academies were the major secondary schools in the first half of the nineteenth century. They were single-sex and coeducational. Academies prepared males for college. High schools developed such as the Boston English Classical School. In the 1870s, school districts levied taxes to support public high schools. In 1892, the Committee of Ten defined the mission and purposes of high schools. In 1918, the Commission on the Reorganization of Secondary Education redefined high school as a comprehensive institution. 	<p style="text-align: center;">Normal Schools and Preparing Women as Teachers</p> <ul style="list-style-type: none"> Normal schools were established to provide standardized teacher training for the growing common school movement. Normal schools provided a career path for women. Catharine Beecher (1800-1878) connected the common school movement to women's education. Beecher created the Hartford Female Seminary.
---	---

4

<p>American Secondary Schools</p> <p>schools in the first half of the nineteenth century. They were single-sex and coeducational. Academies prepared males for college.</p> <p>Boston English Classical School. In the 1870s, school districts levied taxes to support public high schools.</p> <p>In 1892, the Committee of Ten defined the mission and purposes of high schools.</p> <p>In 1918, the Commission on the Reorganization of Secondary Education redefined high school as a comprehensive institution.</p>	<p style="text-align: center;">Normal Schools and Preparing Women as Teachers</p> <ul style="list-style-type: none"> Normal schools were established to provide standardized teacher training for the growing common school movement. Normal schools provided a career path for women. Catharine Beecher (1800-1878) connected the common school movement to women's education. Beecher created the Hartford Female Seminary. 	<p>The Development of American Secondary Schools</p> <ul style="list-style-type: none"> Academies were the major secondary schools in the first half of the nineteenth century. They were single-sex and coeducational. High schools developed such as the Boston English Classical School. In the 1870s, school districts levied taxes to support public high schools. In 1892, the Committee of Ten defined the mission and purposes of high schools. In 1918, the Commission on the Reorganization of Secondary Education redefined high school as a comprehensive institution.
---	---	---

5

<p>Preparing Women as Teachers</p> <p>Normal schools were established to provide standardized teacher training for the growing common school movement.</p> <p>Normal schools provided a career path for women.</p> <p>Catharine Beecher (1800-1878) connected the common school movement to women's education. Beecher created the Hartford Female Seminary.</p>	<p style="text-align: center;">The Development of American Secondary Schools</p> <ul style="list-style-type: none"> Academies were the major secondary schools in the first half of the nineteenth century. They were single-sex and coeducational. Academies prepared males for college. High schools developed such as the Boston English Classical School. In the 1870s, school districts levied taxes to support public high schools. In 1892, the Committee of Ten defined the mission and purposes of high schools. In 1918, the Commission on the Reorganization of Secondary Education redefined high school as a comprehensive institution.
---	---

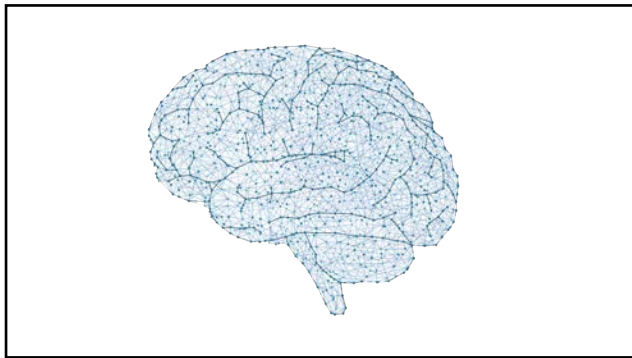
6

to children of poor children in schools	agricultural and mechanical education	These schools were to be common to children of all social and economic classes. African children largely were excluded from common schools until after the Civil War.	agricultural
aring provide growing ath for ected the First Female	The Development of American Secondary Schools <ul style="list-style-type: none"> Academies were the only secondary schools in the first half of the nineteenth century. They were discipline and vocational. Academies prepared males for college. High schools developed first as the Boston English Classical School in the 1780s, which offered level classes to support public high schools. In 1802, the Committee of Ten defined the mission and purposes of high schools. In 1815, the Commission on the Reorganization of Secondary Education modeled high school as a comprehensive institution. 	Normal Schools and Preparing Women as Teachers <ul style="list-style-type: none"> Normal schools were established to provide standardized teacher training for the growing common school movement. Normal schools provided a career path for women. Catharine Beecher (1800-1878) connected the common school movement to women's education. Beecher created the Hartford Female Seminary. 	The Development of American Secondary Schools <ul style="list-style-type: none"> Academies were the only secondary schools in the first half of the nineteenth century. High schools developed first as the Boston English Classical School in the 1780s, which offered level classes to support public high schools. In 1802, the Committee of Ten defined the mission and purposes of high schools. In 1815, the Commission on the Reorganization of Secondary Education modeled high school as a comprehensive institution.
rit and and created entury	The American College and University <ul style="list-style-type: none"> Protestant denominations established church-affiliated institutions starting in the seventeenth century. The Morrill Act of 1862 generated income from land grants to support state colleges for 	Common School Movement and One-Room Schools <ul style="list-style-type: none"> The common school movement gained momentum between 1820 and 1850 and created publicly controlled and funded elementary education. Horace Mann served as secretary of the Massachusetts Board of Education and oversaw the development of the common school movement. 	The American College and University <ul style="list-style-type: none"> Protestant denominations established church-affiliated institutions starting in the seventeenth century. The Morrill Act of 1862 generated income from land grants to support state colleges for

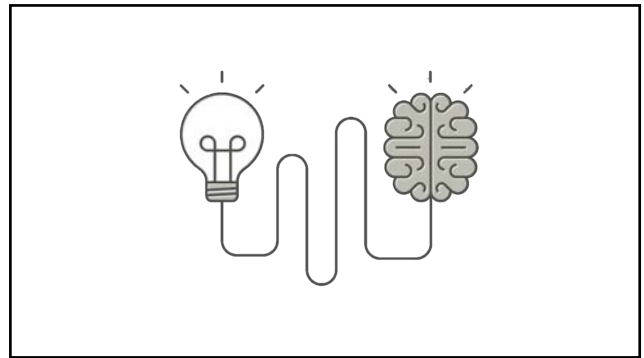
7

to children of poor children in schools	agricultural and mechanical education	These schools were to be common to children of all social and economic classes. African children largely were excluded from common schools until after the Civil War.	agricultural
aring provide growing ath for ected the First Female	The Development of American Secondary Schools <ul style="list-style-type: none"> Academies were the only secondary schools in the first half of the nineteenth century. They were discipline and vocational. Academies prepared males for college. High schools developed first as the Boston English Classical School in the 1780s, which offered level classes to support public high schools. In 1802, the Committee of Ten defined the mission and purposes of high schools. In 1815, the Commission on the Reorganization of Secondary Education modeled high school as a comprehensive institution. 	Normal Schools and Preparing Women as Teachers <ul style="list-style-type: none"> Normal schools were established to provide standardized teacher training for the growing common school movement. Normal schools provided a career path for women. Catharine Beecher (1800-1878) connected the common school movement to women's education. Beecher created the Hartford Female Seminary. 	The Development of American Secondary Schools <ul style="list-style-type: none"> Academies were the only secondary schools in the first half of the nineteenth century. High schools developed first as the Boston English Classical School in the 1780s, which offered level classes to support public high schools. In 1802, the Committee of Ten defined the mission and purposes of high schools. In 1815, the Commission on the Reorganization of Secondary Education modeled high school as a comprehensive institution.
rit and and created entury	The American College and University <ul style="list-style-type: none"> Protestant denominations established church-affiliated institutions starting in the seventeenth century. The Morrill Act of 1862 generated income from land grants to support state colleges for 	Common School Movement and One-Room Schools <ul style="list-style-type: none"> The common school movement gained momentum between 1820 and 1850 and created publicly controlled and funded elementary education. Horace Mann served as secretary of the Massachusetts Board of Education and oversaw the development of the common school movement. 	The American College and University <ul style="list-style-type: none"> Protestant denominations established church-affiliated institutions starting in the seventeenth century. The Morrill Act of 1862 generated income from land grants to support state colleges for

8



9



10

<p>Benefits of Peer Mentoring</p> <ul style="list-style-type: none"> For the mentor: <ul style="list-style-type: none"> Personal satisfaction from helping a peer Leadership and communication skills Patience, insight, understanding, and empathy Confidence May experience different cultural, social, or economic background For the mentee: <ul style="list-style-type: none"> Communication skills Psychological and emotional support ("moral" support) Knowledge to support academic success Confidence Enthusiasm, inspiration and motivation for their chosen academic program/career May experience different cultural, social, or economic background

11



12

The Gettysburg Address

- Delivered on Nov 19, 1863
- Only 271 words
- “Four score and seven years ago...”
- One of the most influential statements of American purpose

13



14

ONE-SENTENCE TAKEAWAY

15

By the end of this presentation, the audience will be able to **distill their slides** so that they enhance (rather than duplicate) what presenters say.

16

By the end of this presentation, the audience will be able to **present slides more effectively**, so that audiences will be engaged.

17

By the end of this presentation, the audience will be able to _____,
(do/know what?)
 so that they _____.
(benefit how?)

18

REDUCE
FRICTION

19




20

Race in U.S. Public Schools

Minority students will become the **majority** (projected 2025 numbers):


- White: 46%
- Black: 15%
- Hispanic: 29%
- Asian/PI: 6%
- Others: 5%



21

Race in U.S. Public Schools

Minority students will become the majority




FINGER SNAP TEST

22

Race in U.S. Public Schools

Minority students will become the **majority** (projected 2025 numbers):

- White: 46%
- Black: 15%
- Hispanic: 29%
- Asian/PI: 6%
- Others: 5%




23

Race in U.S. Public Schools

Minority students will become the **majority**:

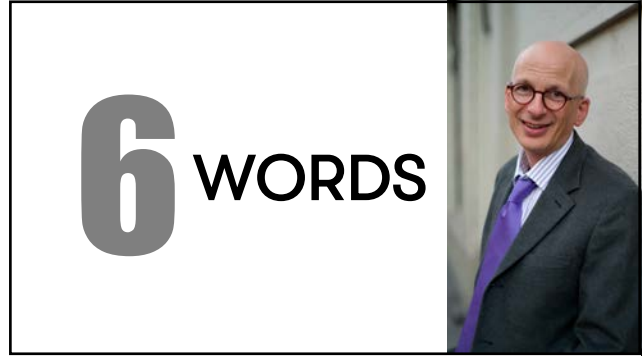
White	46%
Black	15%
Hispanic	29%
Asian/PI	6%
Others	5%



24



25



26

to children of mean children schools	agricultural and mechanical education	<ul style="list-style-type: none"> These schools were to be common to children of all social and economic classes. African children largely were excluded from common schools until after the Civil War. 	agricultural
aring provide growing ath for lected the Ford Female	The Development of American Secondary Schools <ul style="list-style-type: none"> Academics were the most important schools in the first half of the nineteenth century. They were single-sex and coeducational. Academics prepared males for college. High schools developed such as the Boston English Classical School in the 1870s, whose students held leases to support public high schools. In 1882, the Committee of Ten defined the mission and purposes of high schools. In 1918, the Commission on the Reorganization of Secondary Education redefined high school as a comprehensive institution. 	Normal Schools and Preparing Women as Teachers <ul style="list-style-type: none"> Normal schools were established to provide standardized teacher training for the growing common school movement. Normal schools provided a career path for women. Catharine Beecher (1800-1878) connected the common school movement to women's education. Beecher created the Hartford Female Seminary. 	The I <ul style="list-style-type: none"> Academics that led to and conducted college. High school classes to support high schools. In 1882, the Committee of Ten defined the mission and purposes of high schools. In 1918, the Commission on the Reorganization of Secondary Education redefined high school as a comprehensive institution.
hit and and created entirely the and oversee 2002	The American College and University <ul style="list-style-type: none"> Protestant denominations established church-affiliated institutions starting in the seventeenth century. The Morrill Act of 1862 generated income from land grants to support state colleges for 	Common School Movement and One-Room Schools <ul style="list-style-type: none"> The common school movement gained momentum between 1820 and 1850 and created publicly controlled and funded elementary education. Horace Mann served as secretary of the Massachusetts Board of Education and oversaw the development of the common school movement. 	The Ame <ul style="list-style-type: none"> Protestant-affiliated institutions. The Morrill land grants.

27

WHAT'S THE BEST WAY TO STRUCTURE YOUR LECTURE?

I, WE, YOU

EXPLORE, LECTURE, APPLY (ELA)

YOU, Y'ALL, WE

I, WE, YOU

EXPLORE, LECTURE, APPLY (ELA)

YOU, Y'ALL, WE

I, WE, YOU

EXPLORE, LECTURE, APPLY (ELA)

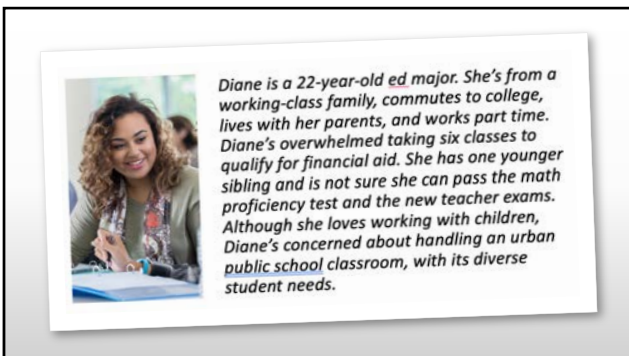
YOU, Y'ALL, WE

YOU, Y'ALL, WE

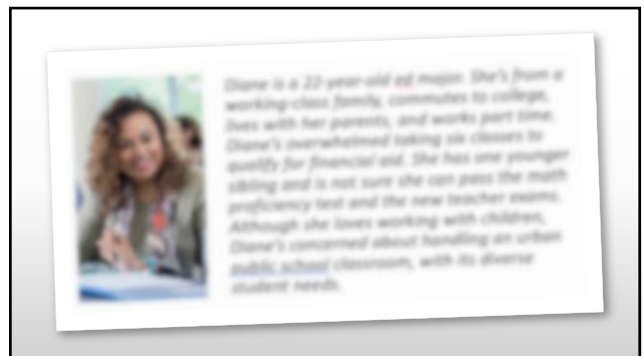
EXPLORE, LECTURE, APPLY (ELA)

YOU, Y'ALL, WE

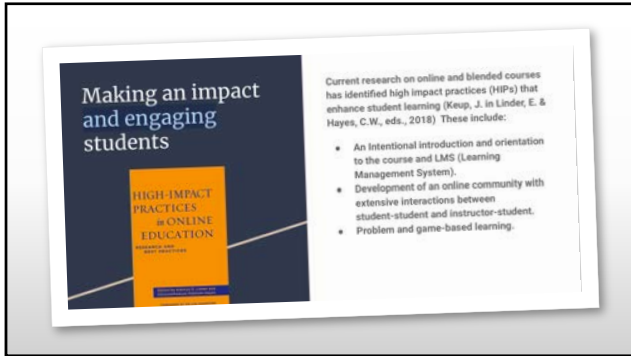
28



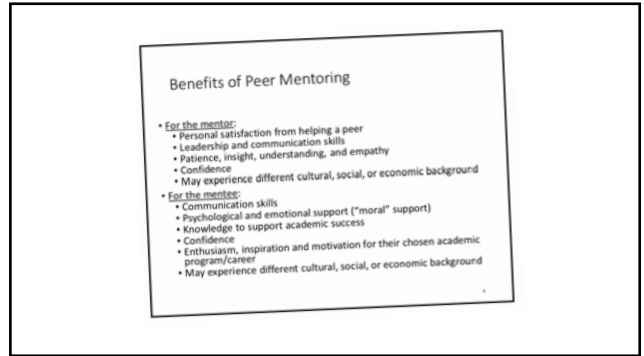
29



30



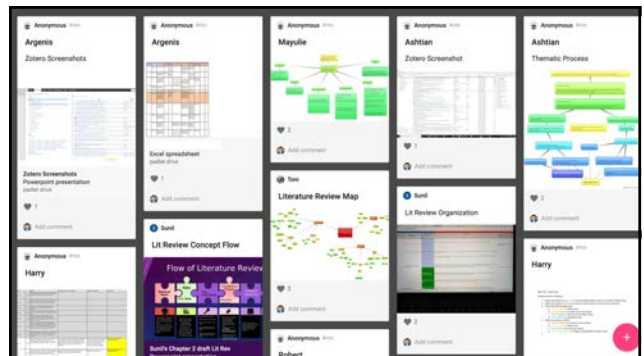
31



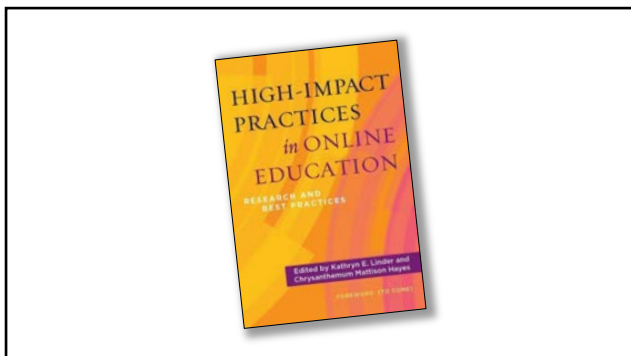
32



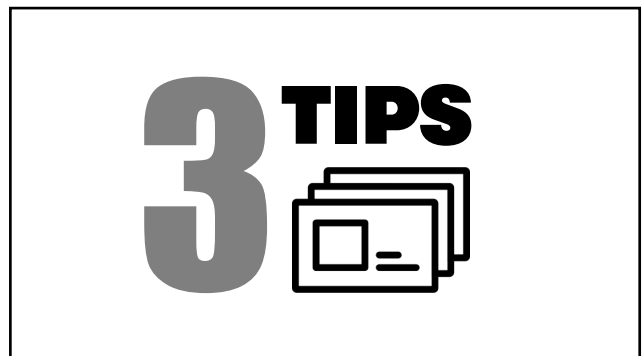
33




34



35





36

1 Use one visual 

37

Defined as...
 ...the feeling of being distressed, fearful, or stressed out as a result of school pressures.
 OR
 When googled....
 Students who experience **academic anxiety** feel apprehensive over **academic** tasks. Students may feel **anxiety** related to every **academic** task.

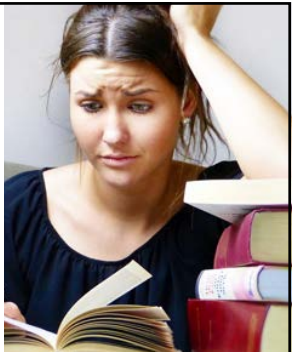
<https://prezi.com/zw3eyvtjrwz/academic-anxiety/>



38

Academic anxiety 


39


Academic anxiety 


40

Academic anxiety 

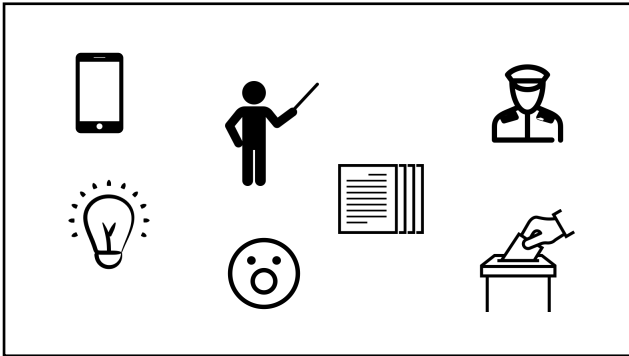
41

pixabay 

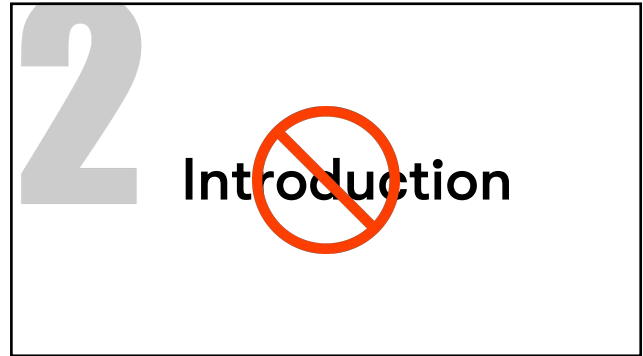
 Unsplash

 Noun Project

42



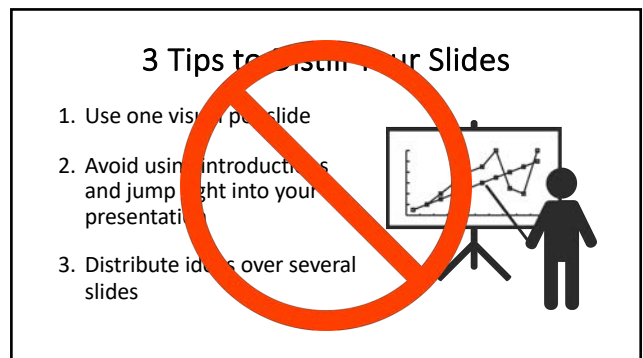
43



44



45

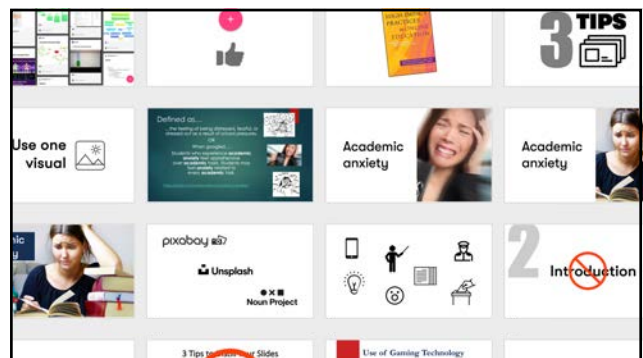


46

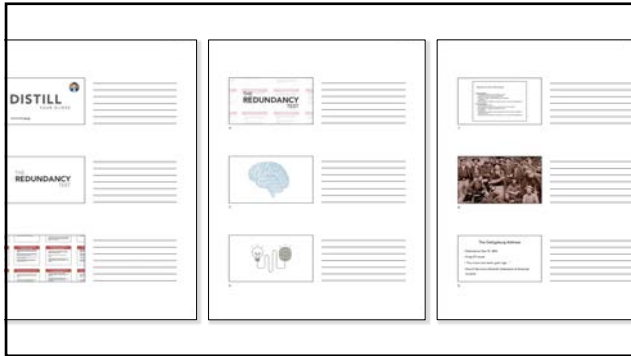
Use of Gaming Technology

- Negative Outcomes
 - Of course!
- Positive Outcomes
 - Motivational
 - Emotional
 - Social & Cognitive Gains
 - (Granic, Lobel and Engels, 2014)

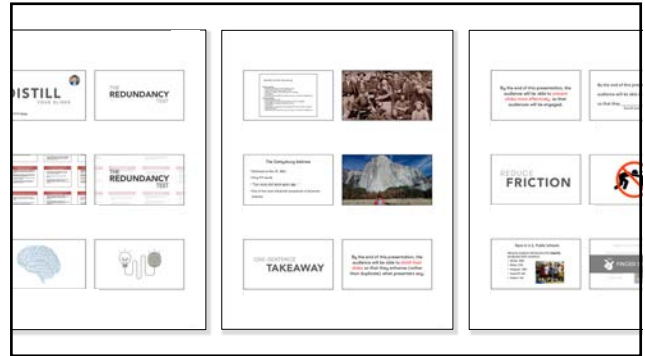
47



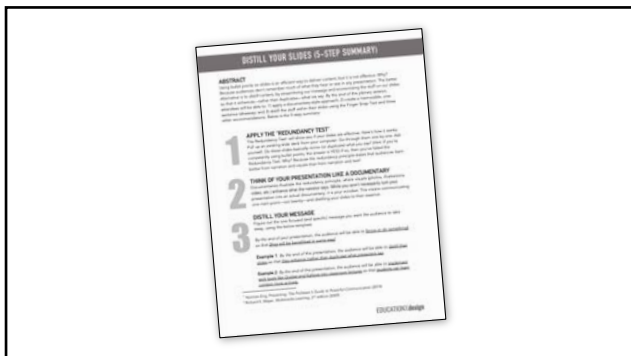
48




49



50



51



NORMAN ENG, ED.D
EDUCATIONxdesign
 (pronounced "education by design")

Founder & President
Communicate Clearly. Change the World.
 Find out how at: NormanEng.org
Norman@educationxdesign.com

Adjunct Associate Professor
 Dept. of Curriculum & Instruction
 School of Education
 City College of New York, CUNY
NEng@ccny.cuny.edu

52